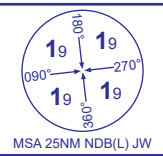


INSTRUMENT APPROACH - ICAO

JERSEY  
NDB(L)/DME  
RWY 08  
(ACFT CAT A,B,C,D)

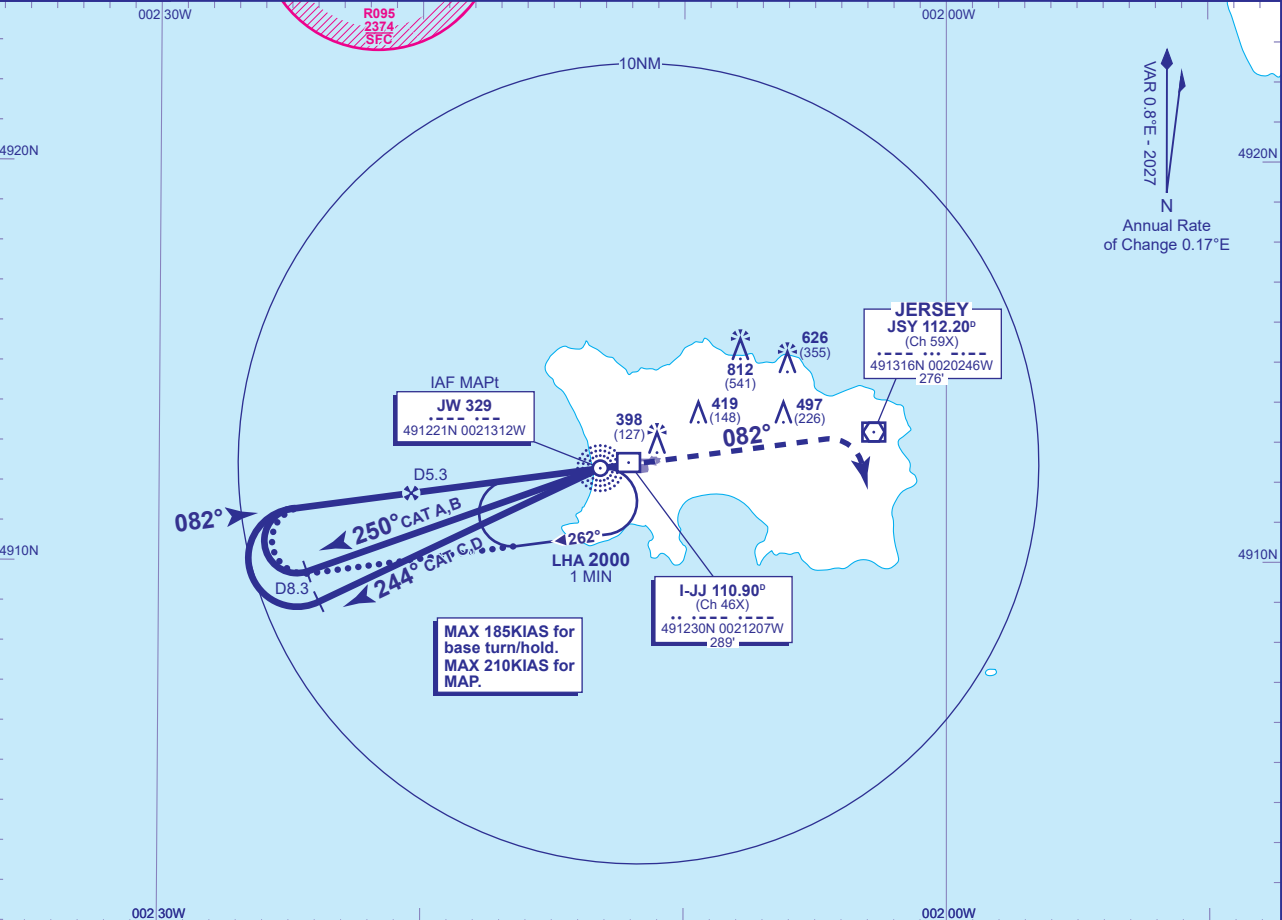


ATC	125.205, 120.455
APP	120.305, 118.555
TWR	119.455
	121.905
ATIS	134.680

JERSEY CONTROL
JERSEY APPROACH
JERSEY TOWER
JERSEY GROUND
JERSEY INFORMATION

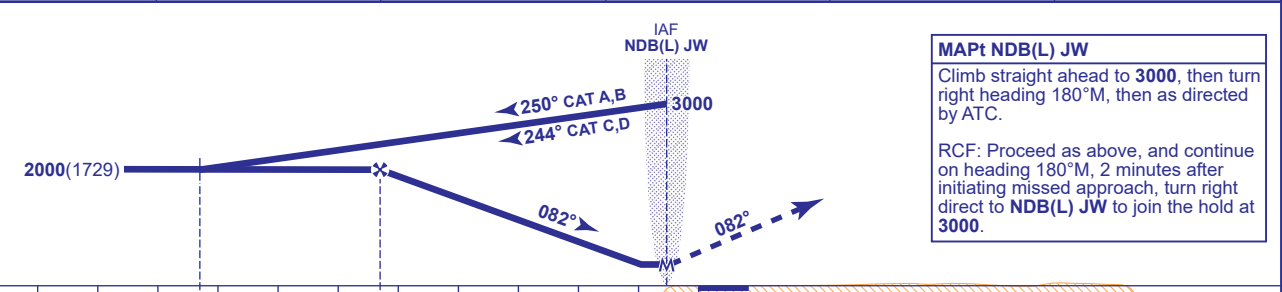
AD ELEVATION	277
THR ELEVATION	271
OBSTACLE ELEVATION	812 AMSL (541) (ABOVE THR)
BEARINGS ARE MAGNETIC	

TRANSITION ALTITUDE	5000
---------------------	------



RECOMMENDED PROFILE Gradient 5.2%, 320FT/NM

DME I-JJ	5	4	3	2	1
ALT(HGT)	1920(1649)	1600(1329)	1280(1009)	960(689)	640(369)



**MAPt NDB(L) JW**  
Climb straight ahead to **3000**, then turn right heading 180°M, then as directed by ATC.  
  
RCF: Proceed as above, and continue on heading 180°M, 2 minutes after initiating missed approach, turn right direct to **NDB(L) JW** to join the hold at **3000**.

Aircraft Category	A	B	C	D	Rate of descent	G/S KT	160	140	120	100	80
OCA (OCH)	WITH DME	590(319)	590(319)	590(319)	590(319)	FT/MIN	850	750	640	530	430
	NO DME	640(369)	640(369)	640(369)	640(369)						
VM(C)OCA (OCH AAL)	Total Area	770(493)	770(493)	1210(933)	1210(933)						
	South of RWY 08/26	770(493)	770(493)	1030(753)	1030(753)						

**ALTERNATIVE PROCEDURE EXTENDED HOLDING PATTERN (MAX 185KIAS)**  
Arrive at IAF NDB(L) JW at **3000**. Extend the outbound leg of the NDB(L) JW holding pattern to I-JJ D8.3 descending to **2000**(1729). Turn right onto the extended FAT, when established, continue as for main procedure.

**AIRCRAFT UNABLE TO RECEIVE DME I-JJ**  
As for main and alternative procedure except fly outbound for 3MIN (CAT A); 2.5MIN (CAT B); 2MIN (CAT C,D) prior to base turn. When established on FAT descend to MDA.

**CHANGE (2/26): JERSEY CONTROL (SECONDARY) FREQUENCY.**